

90.0 acres of land, more or less, being approximately 9.05 ac. out of the Benjamin Williams Sur. No. 25, Abs. No. 4 and 80.95 ac. out of the Elijah Tate Sur. No. 147, Abs. No. 590 in Blanco Co., Texas and also being part of part of TRACT 1 - 193.0 Ac. and part of TRACT 2 - 4.6 Ac. conveyed to Robert Kendrick recorded in Vol. 154, Pg. 553, Blanco Co. Official Public Records, part of 26.98 Ac. conveyed to Robert Kendrick and Jean P. Ralston recorded in Vol. 244, Pg. 922, Blanco County Official Public Records and all of a 0.39 Ac. tract conveyed to Robert Kendrick and Jean Ralston recorded in Vol. 239, Pg. 833 in the Blanco County Official Public Records, said 90.0 acre tract includes part of County Road No. 109 (Cottonwood Road) and is the same tract of land conveyed to Larry W. McMahon and Sue T. McMahon recorded in Vol. 308, Pg. 07 in the Blanco County Official Public Records.

Approx. pavement area.
COUNTY ROAD NO. 109
 (COTTONWOOD ROAD)
 (20.0' W/100' UNIFORM)

Peter Goettl & Elizabeth Goettl
 24.55 Ac.
 Vol. 253, Pg. 156
 Blanco Co. Official Public Records

Robert Kendrick and Jean P. Ralston
 Remainder of 26.98 Ac.
 Vol. 244, Pg. 922
 Blanco Co. Official Public Records

Robert Kendrick and Jean P. Ralston
 Part of 26.98 Ac.
 Vol. 244, Pg. 922
 Blanco Co. Official Public Records

Dennis Cullinan and Jane Morris
 134.91 Ac.
 Vol. 330, Pg. 776
 Blanco Co. Official Public Records

Robert Kendrick
 Remainder of TRACT 2 - 4.6 Ac.
 Vol. 154, Pg. 553
 Blanco Co. Official Public Records

Robert Kendrick
 Part of TRACT 2 - 4.6 Ac.
 Vol. 154, Pg. 553
 Blanco Co. Official Public Records

Robert Kendrick
 Part of TRACT 1 - 193.0 Ac.
 Vol. 154, Pg. 553
 Blanco Co. Official Public Records

Michael D. Booth, et ux
 41.61 Ac.
 Vol. 212, Pg. 409
 Blanco Co. Official Public Records

Proposed Insured: David S. Crawford

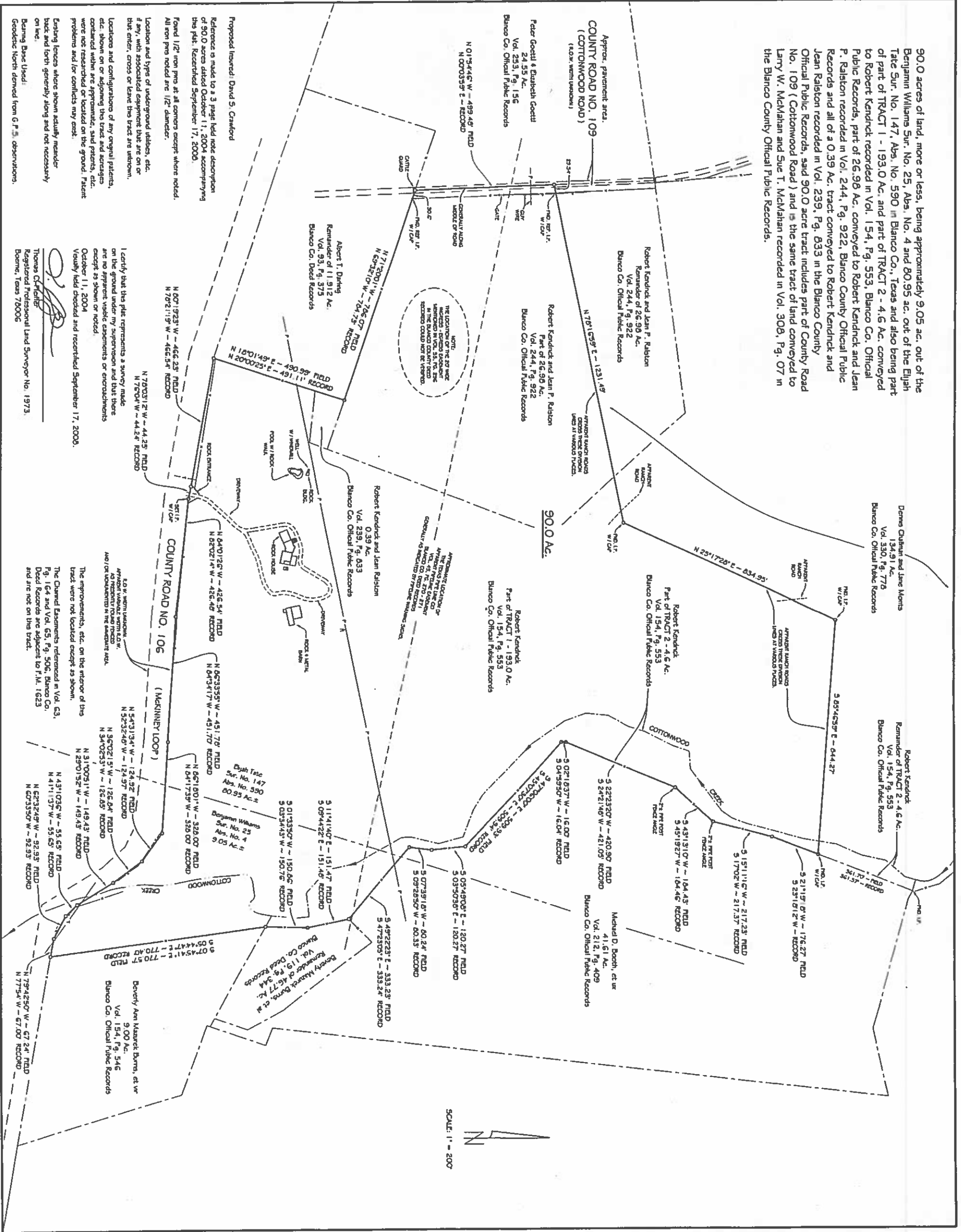
Reference is made to a 3 page field note description of 90.0 acres dated October 11, 2004 accompanying this plat. Recorded September 17, 2006.

Found 1/2" iron pins at all corners except where noted. All iron pins noted are 1/2" diameter.

Location and types of underground utilities, etc. if any, with associated equipment that are on or that enter, cross or leave this tract are unknown. Locations and configurations of any original patents, etc. shown on or adjoining this tract and acreage contained within are approximate, said patents, etc. were not researched or located on the ground. Patent problems and/or conflicts may exist.

Existing fences where shown actually measure back and forth generally along and not necessarily on line.

Being Base Used:
 Geoidetic North derived from G.P.S. observations.



October 11, 2004
 Vandy held decided and re-recorded September 17, 2006.

Thomas O'Callahan
 Registered Professional Land Surveyor No. 1973.
 Boerne, Texas 78006